

MOTOR BOARD



FORE CENTER STRUT



FORE CROSS PIECE



TRANSOM

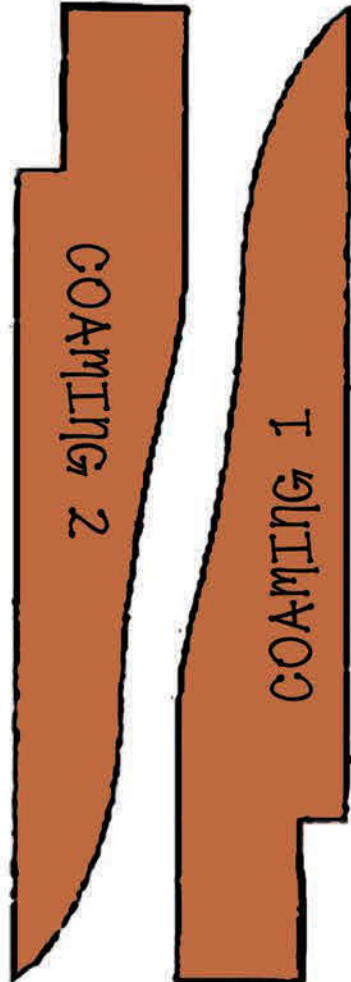
CAREFULLY CUT OUT EACH PIECE AND LAY OVERTOP OF THE ROLLED GINGER-BREAD DOUGH. DON'T ROLL THE DOUGH TOO THIN OR ELSE THE LONGER PARTS WILL BREAK. BE SURE TO MAKE SOME EXTRA PARTS IF YOU HAVE ENOUGH DOUGH JUST INCASE THINGS GO WRONG.



STRINGER



STRINGER



COAMING 2

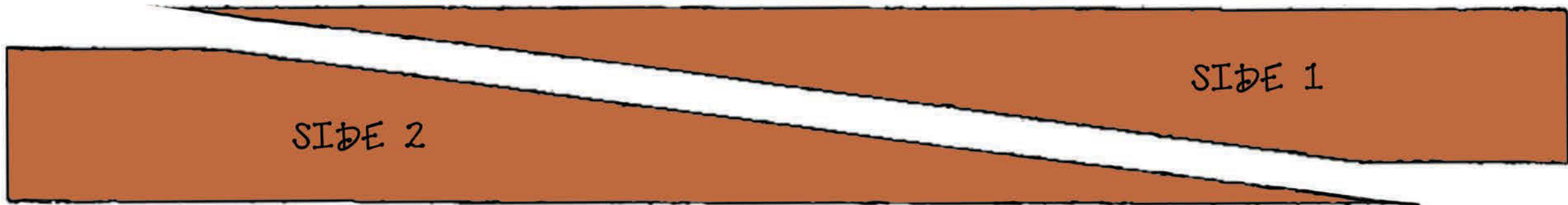
COAMING 1

GINGERBREAD SEAFLEA

THESE PLANS WILL MAKE A MINI MAX GINGERBREAD SEAFLEA 16" LONG AND 8" WIDE. PLEASE REFER TO THE "REAL" MINI MAX PLANS ON OUR WEBSITE FOR THE LOCATION OF EACH PIECE. BAKE THE GINGERBREAD PARTS ACCORDING TO YOUR OWN RECIPE INSTRUCTIONS. TRIM EACH PIECE TO FIT AFTER BAKING USING A SHARP KNIFE OR A SANDING BLOCK...YES, WE DID SAY "SANDING BLOCK." IT REALLY WORKS!



STEERING WHEEL BOARD



SIDE 1

SIDE 2



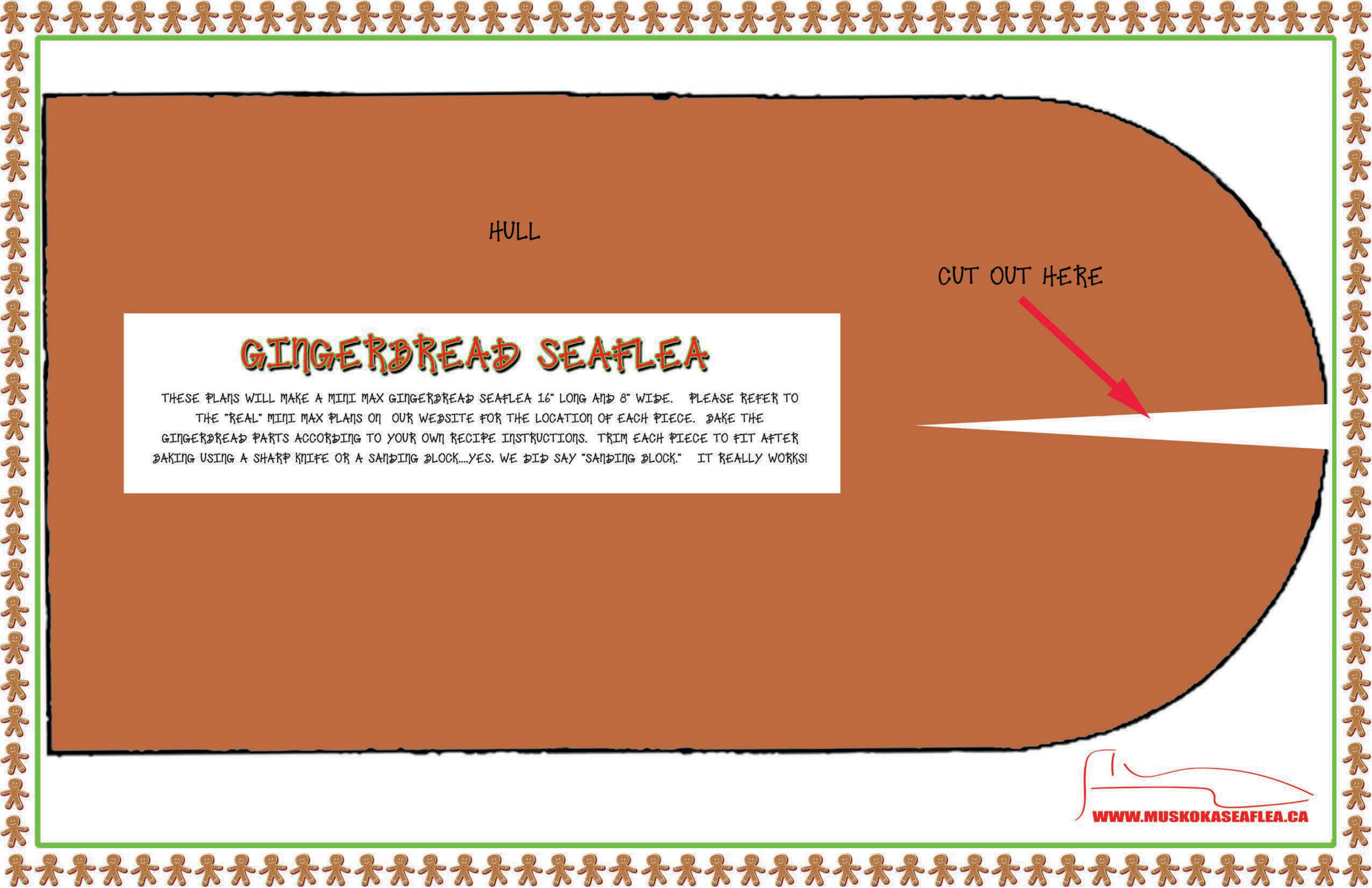
STEERING

WHEEL SUPPORTS

GINGERBREAD SEAFLEA

THESE PLANS WILL MAKE A MINI MAX GINGERBREAD SEAFLEA 16" LONG AND 8" WIDE. PLEASE REFER TO THE "REAL" MINI MAX PLANS ON OUR WEBSITE FOR THE LOCATION OF EACH PIECE. BAKE THE GINGERBREAD PARTS ACCORDING TO YOUR OWN RECIPE INSTRUCTIONS. TRIM EACH PIECE TO FIT AFTER BAKING USING A SHARP KNIFE OR A SANDING BLOCK....YES, WE DID SAY "SANDING BLOCK." IT REALLY WORKS!

DECK



HULL

CUT OUT HERE



GINGERBREAD SEAFLEA

THESE PLANS WILL MAKE A MINI MAX GINGERBREAD SEAFLEA 16" LONG AND 8" WIDE. PLEASE REFER TO THE "REAL" MINI MAX PLANS ON OUR WEBSITE FOR THE LOCATION OF EACH PIECE. BAKE THE GINGERBREAD PARTS ACCORDING TO YOUR OWN RECIPE INSTRUCTIONS. TRIM EACH PIECE TO FIT AFTER BAKING USING A SHARP KNIFE OR A SANDING BLOCK...YES, WE DID SAY "SANDING BLOCK." IT REALLY WORKS!



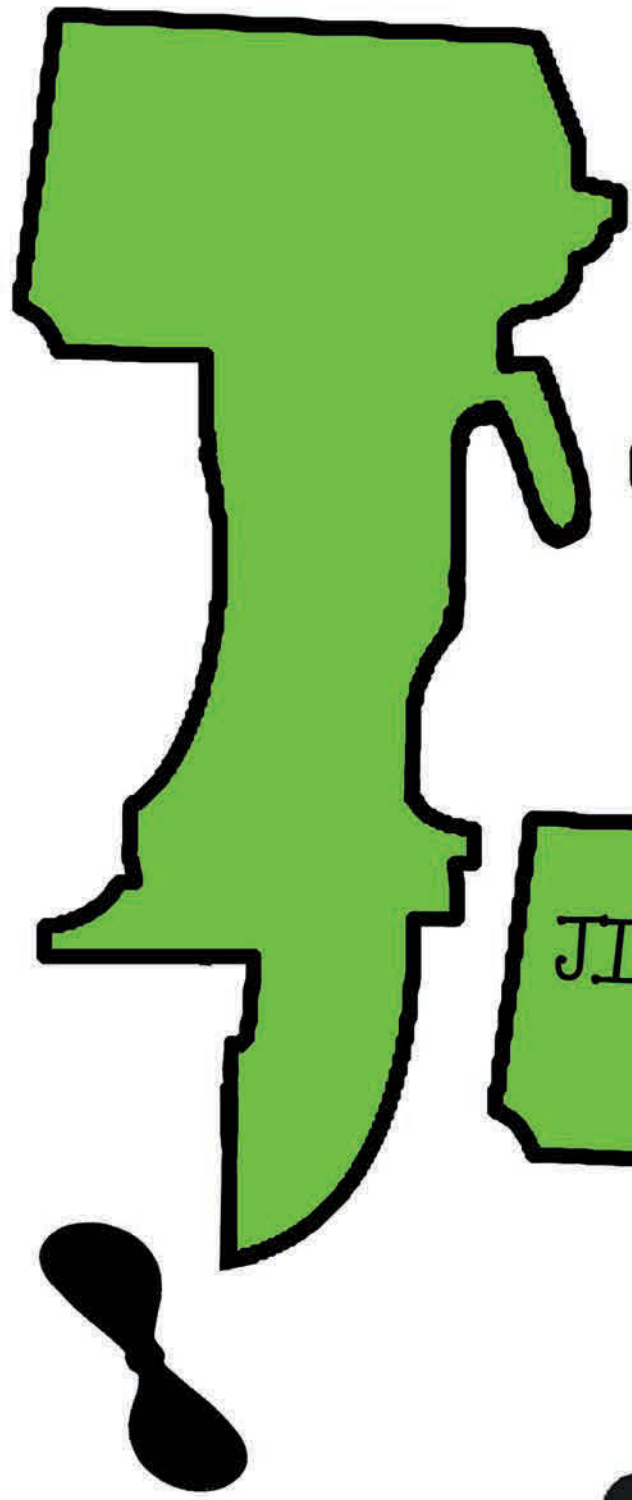
WWW.MUSKOKASEAFLEA.CA

GINGERBREAD SEAFLEA

THESE PLANS WILL MAKE A MINI MAX GINGERBREAD SEAFLEA 16" LONG AND 8" WIDE. PLEASE REFER TO THE "REAL" MINI MAX PLANS ON OUR WEBSITE FOR THE LOCATION OF EACH PIECE. BAKE THE GINGERBREAD PARTS ACCORDING TO YOUR OWN RECIPE INSTRUCTIONS. TRIM EACH PIECE TO FIT AFTER BAKING USING A SHARP KNIFE OR A SANDING BLOCK...YES, WE DID SAY "SANDING BLOCK." IT REALLY WORKS!



Decorate Santa on both sides using red, white and black icing. Make a small gingerbread ball for his hat puff and glue it to the tip of his hat using a toothpick to hold it in place. Use two of those small silver cake balls (dragées) coloured black for eyes.



Cut out motor parts. Use icing sugar to "glue" extra motor cowling sides to make the top of the motor wider. Pipe thin black icing for the motor name.